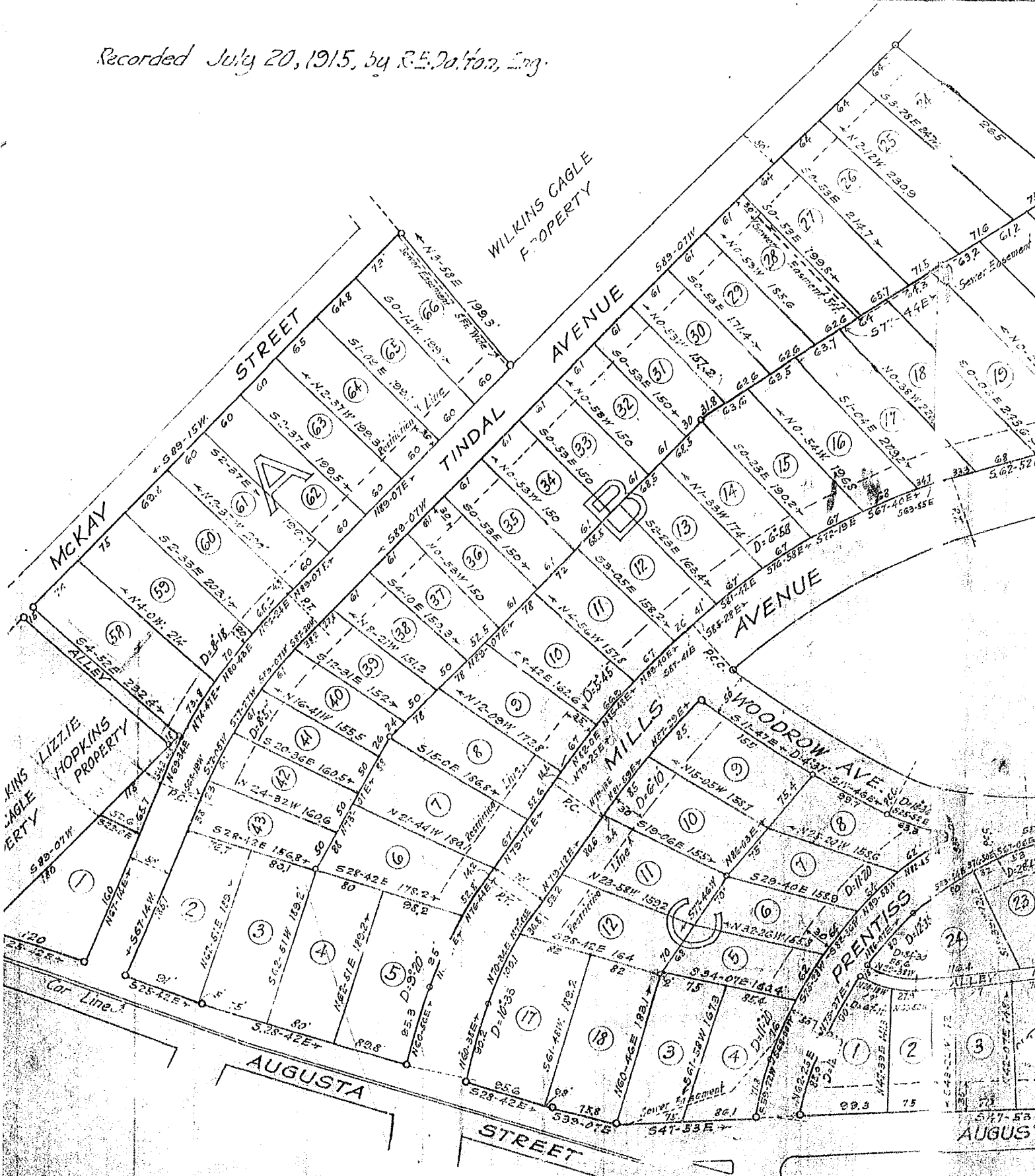


Recorded July 20, 1915, by R.E. Dalton, Eng.



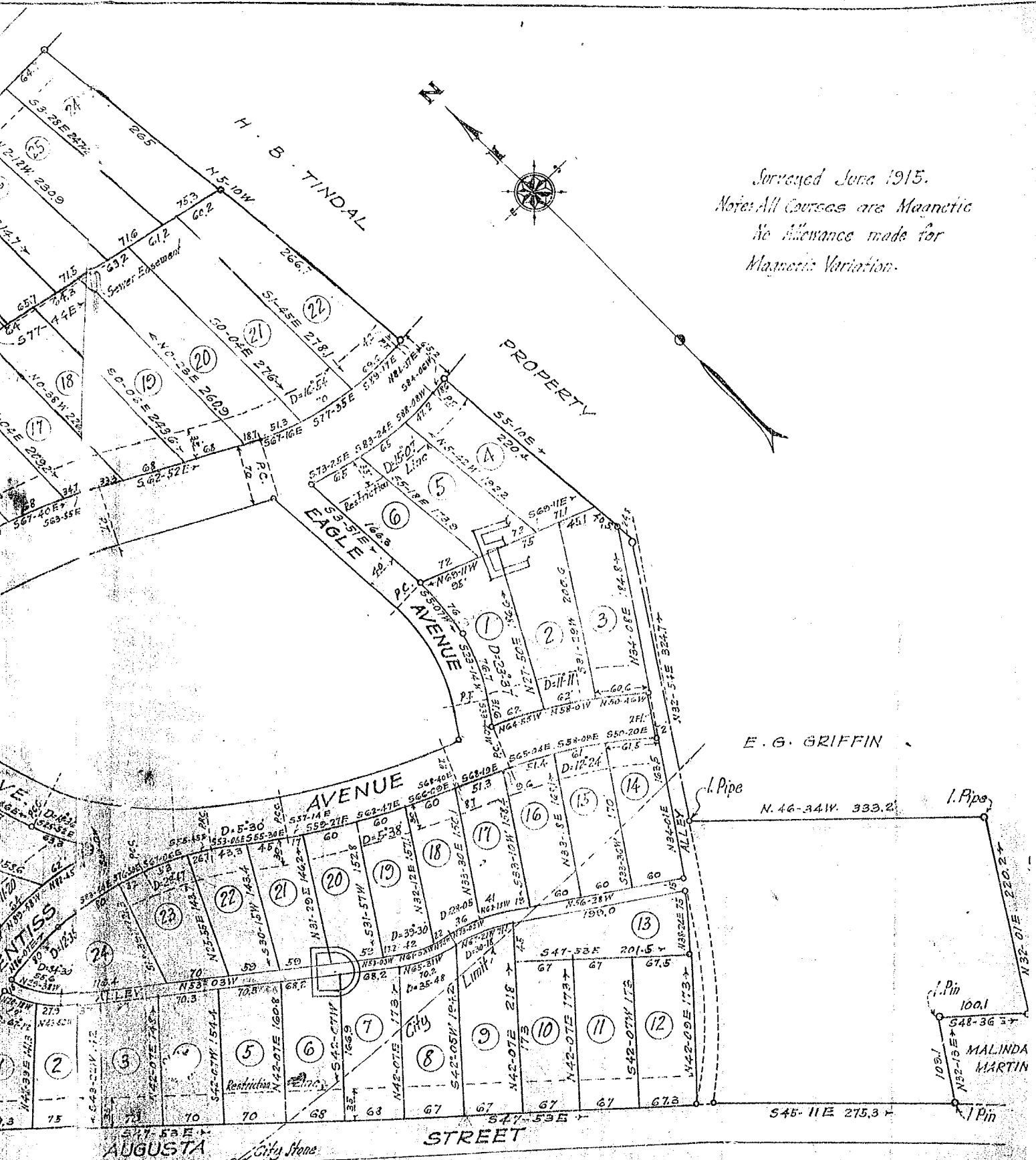
Notes: Courses and Distances on Curves refer to Chords
 from Pivots at all Corners not otherwise noted.
 Division of Lots 15-3, (Inclusive) Block "B" made
 Feb. 1917, by Eliminating Lot 23.

C-238

R. E. DALTON, ENGINEER.
GREENVILLE, S. C.

CAC

Surveyed June 1915.
 Note: All Courses are Magnetic
 No Allowance made for
 Magnetic Variation.



**PROPERTY OF
 CAGLE PARK COMPANY
 IN AND ADJOINING
 GREENVILLE S. C.**

